

FLOOR PLANS - 3 BED HOUSE

No2, No3 + No4



# OAK GROVE

MUSWELL HILL

[oakgrove-muswellhill.com](http://oakgrove-muswellhill.com)

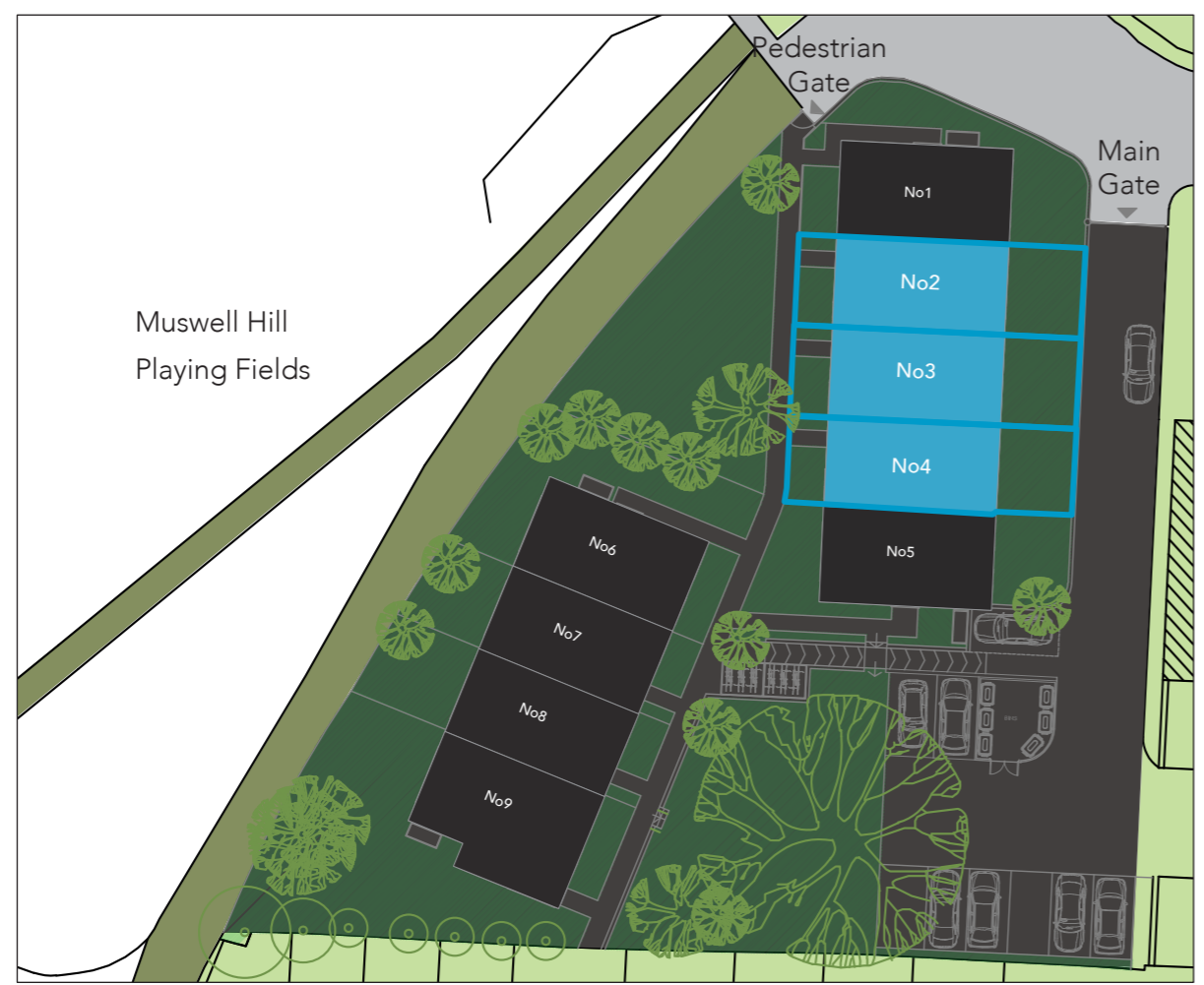
A new development by

**EA  
NDO**



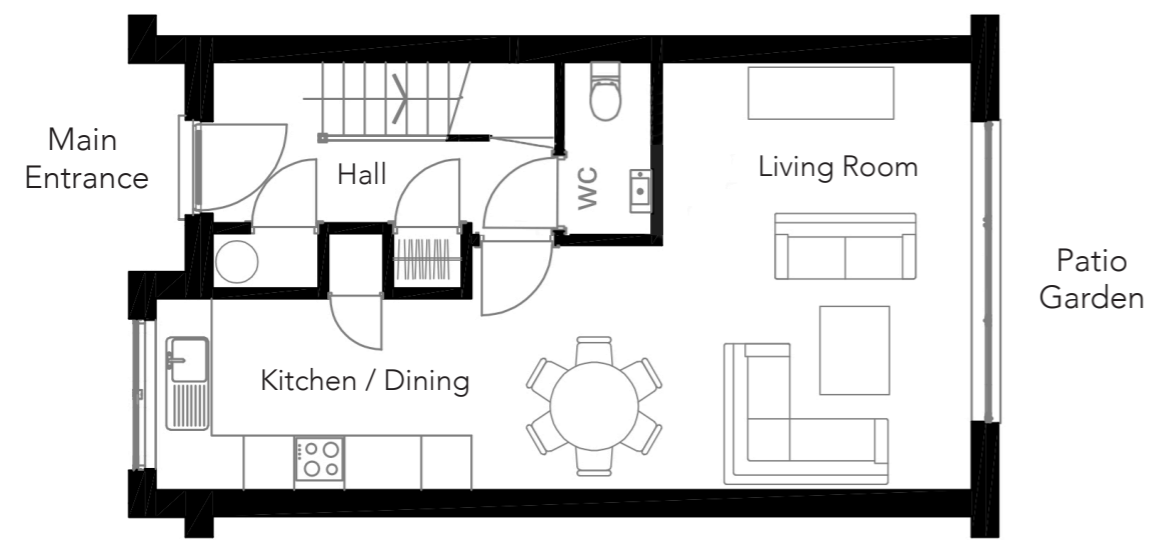
**LOCATION OF 3 BED HOUSES**

- Five 3 Bed houses - Internal floor area - 1,298 sqft / 121 sqm per house
- Terrace A - No2, No3 + No4



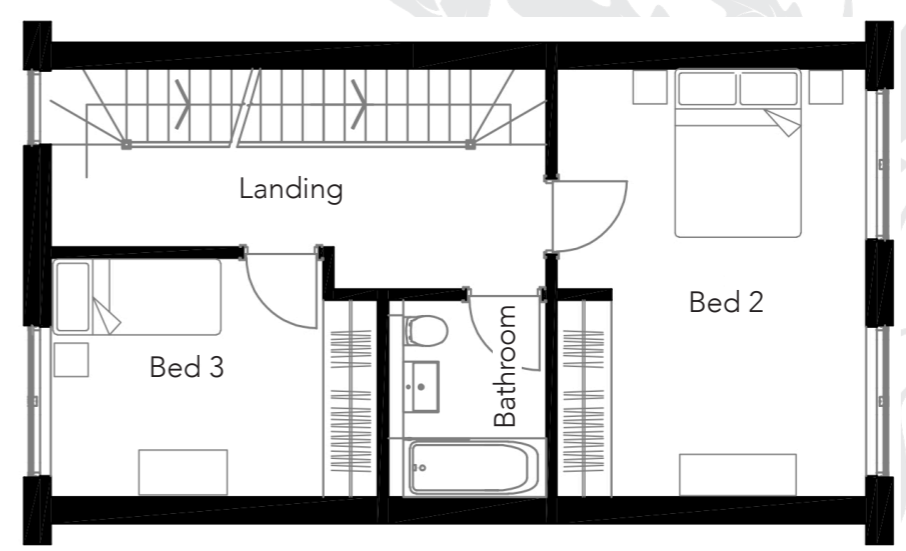
**TYPICAL FLOOR PLANS - 3 BED HOUSES - No2, No3 + No4**

**Ground Floor** - Entrance Hall / GF WC / Kitchen, Dining + Living Room



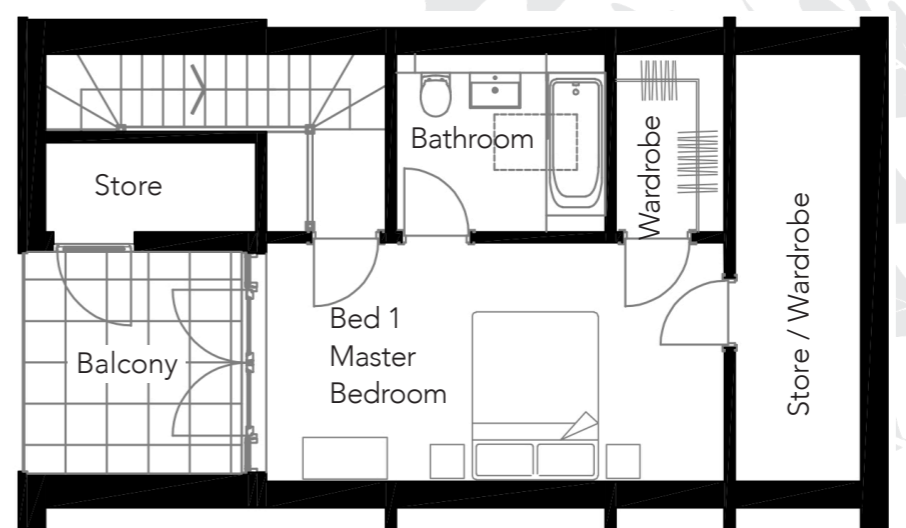
Entrance Hall - 2.03m x 5.26m / Kitchen / Dining - 2.90m x 5.93m / Living Room - 5.01m x 3.66m

**First Floor** - Bedroom 2 / Bedroom 3 / Bathroom



Bed 2 - 5.01m x 3.66m  
 Bed 3 - 3.02m x 3.89m  
 Bathroom - 2.58m x 1.84m

**Second Floor** - Bed 1 (Master Bedroom) inc bathroom, dressing room, balcony + store rooms

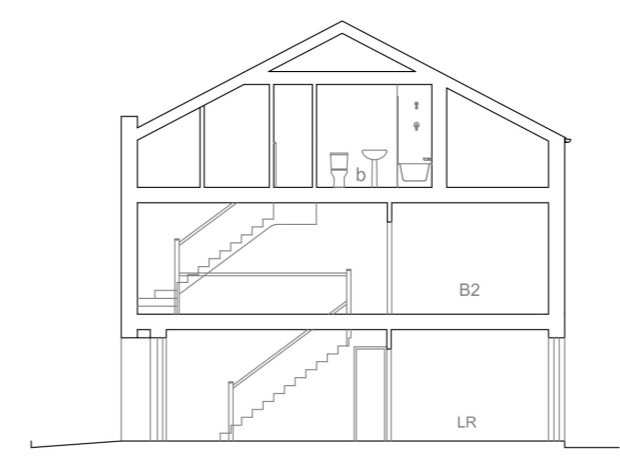


Bed 1 (Master Bedroom)  
 - Bedroom - 5.30m x 3.11m  
 - Bathroom - 1.44m x 1.82m  
 - Balcony - 2.70m x 2.85m

**TYPICAL CROSS SECTIONAL VIEWS - 3 BED HOUSES**

Section A to A

Section B to B





**OAK GROVE**  
MUSWELL HILL

Agent details :

Agent details are also available via our website

