

FLOOR PLANS - 3 BED HOUSE

No7 + No8



OAK GROVE

MUSWELL HILL

oakgrove-muswellhill.com

A new development by

**EA
NDO**



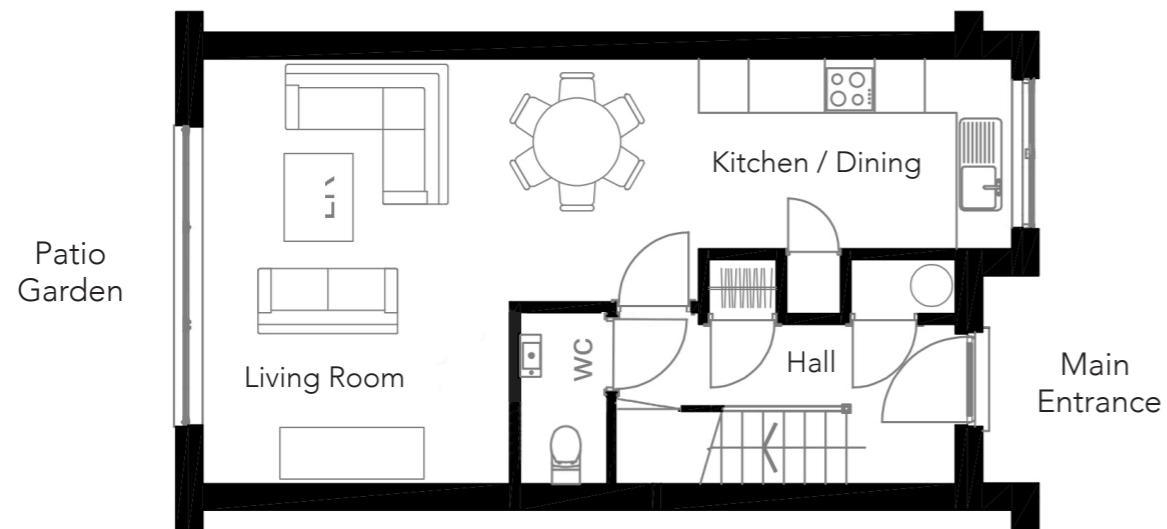
LOCATION OF 3 BED HOUSES

- Five 3 Bed houses - Internal floor area - 1,298 sqft / 121 sqm per house
- Terrace B - No7 + No8



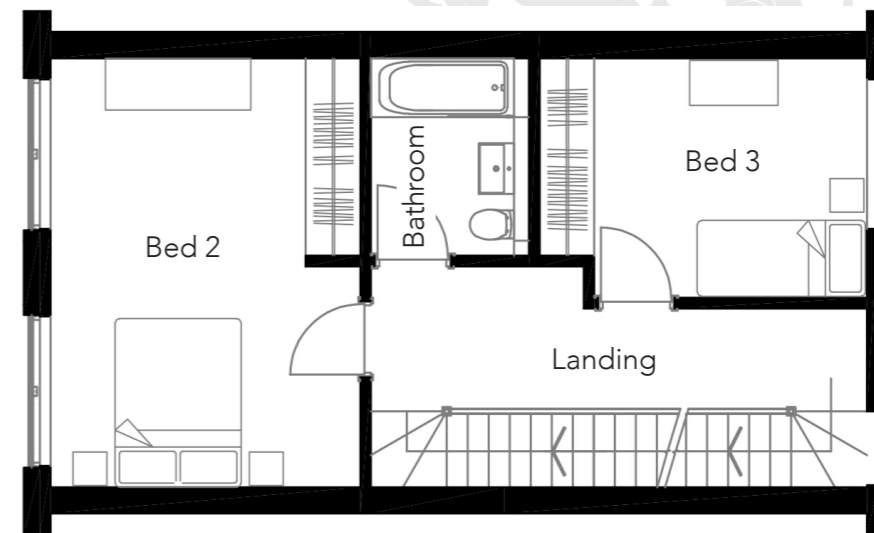
TYPICAL FLOOR PLANS - 3 BED HOUSES - No7 + No8

Ground Floor - Entrance Hall / GF WC / Kitchen, Dining + Living Room



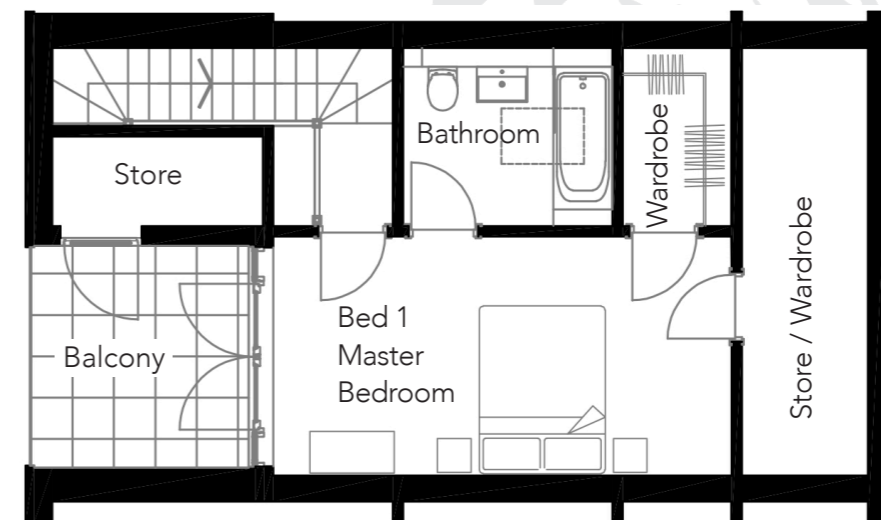
Entrance Hall - 2.03m x 5.26m / Kitchen / Dining - 2.90m x 5.93m / Living Room - 5.01m x 3.66m

First Floor - Bedroom 2 / Bedroom 3 / Bathroom



Bed 2 - 5.01m x 3.66m
 Bed 3 - 3.02m x 3.89m
 Bathroom - 2.58m x 1.84m

Second Floor - Bed 1 (Master Bedroom) inc bathroom, dressing room, balcony + store rooms

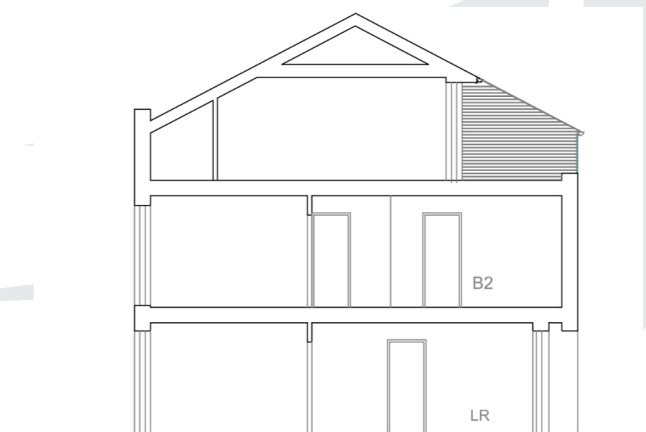
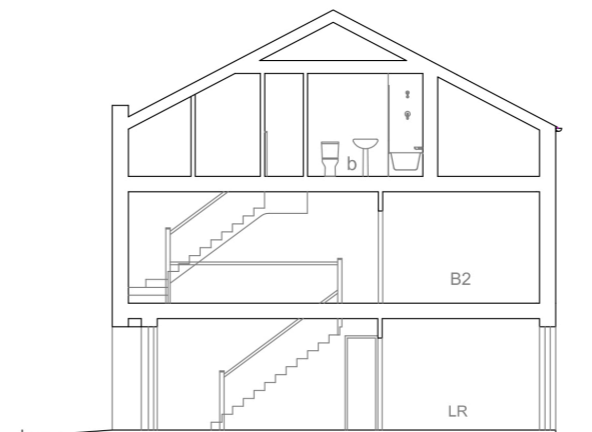


Bed 1 (Master Bedroom)
 - Bedroom - 5.30m x 3.11m
 - Bathroom - 1.44m x 1.82m
 - Balcony - 2.70m x 2.85m

TYPICAL CROSS SECTIONAL VIEWS - 3 BED HOUSES

Section A to A

Section B to B





OAK GROVE

MUSWELL HILL

Agent details :

Agent details are also available via our website

