

FLOOR PLANS - 4 BED HOUSE

No1 + No6



OAK GROVE

MUSWELL HILL

oakgrove-muswellhill.com

A new development by

**EA
NDO**



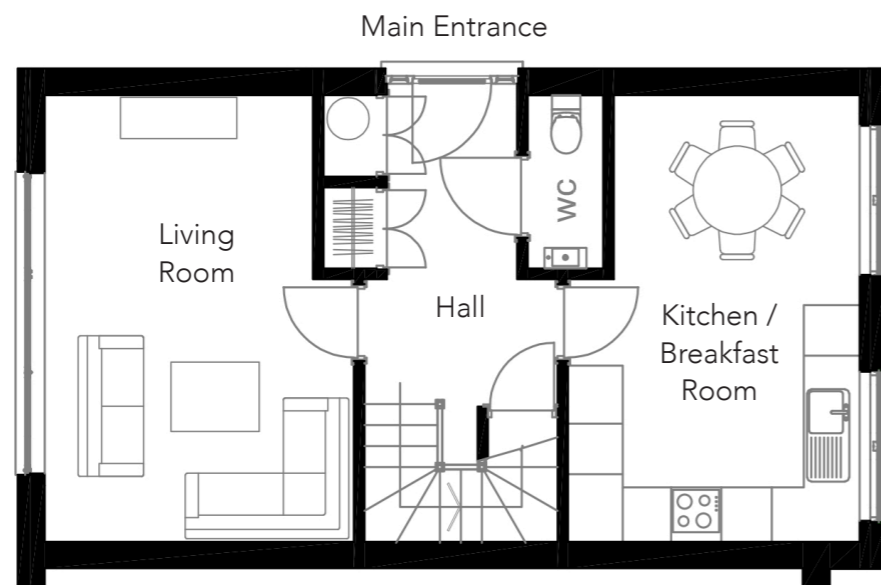
LOCATION OF 4 BED HOUSES - No1 + No6

- Four 4 Bed houses - Internal floor area - 1,339 sqft / 124 sqm per house
- Terrace A - No1 / Terrace B - No6



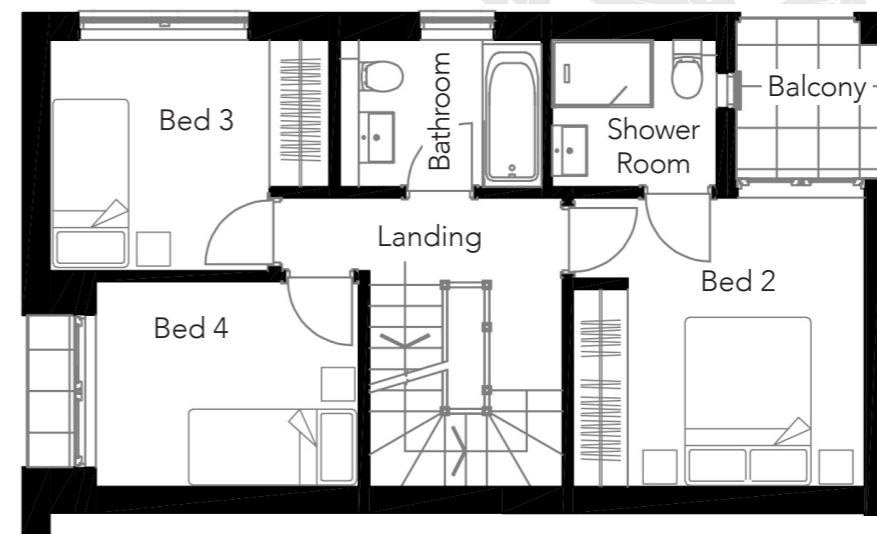
FLOOR PLANS - 4 BED HOUSES - No1 + No6

Ground Floor - Entrance Hall / GF WC / Kitchen + Breakfast room / Living Room



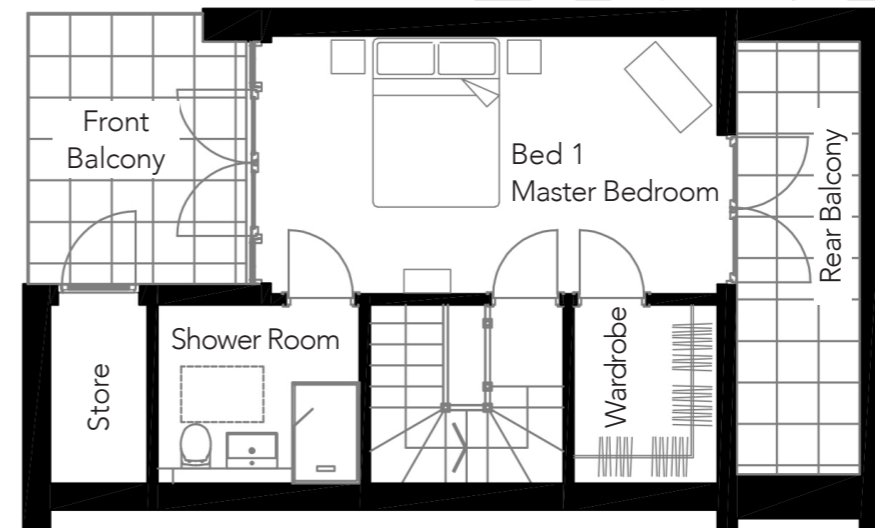
Entrance Hall - 2.30m x 3.59m / Kitchen + Dining - 5.27m x 3.45m / Living Room - 5.27m x 3.65m

First Floor - Bedroom 2 inc ensuite shower room + balcony / Bedroom 3 / Bedroom 4 / Bathroom



Bed 2
 - Bedroom - 3.47m x 3.45m
 - Balcony - 1.80m x 1.80m
 - Shower - 1.72m x 1.72m
 Bed 3 - 2.73m x 3.37m
 Bed 4 - 2.44m x 3.13m
 Bathroom - 2.30m x 1.73m

Second Floor - Bed 1 (Master Bedroom) inc ensuite shower room, dressing room + two balconies



Bed 1 (Master Bedroom Suite)
 - Bedroom - 3.14m x 4.89m
 - Shower Room - 1.87m x 2.30m
 - Front Balcony - 3.38m x 2.70m
 - Rear Balcony - 5.27m x 1.62m

TYPICAL CROSS SECTIONAL VIEWS - 4 BED HOUSES

Section A to A

Section B to B





OAK GROVE

MUSWELL HILL

Agent details :

Agent details are also available via our website

